

EXPRESS



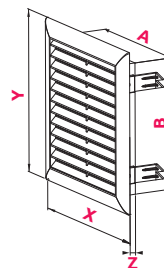
40°C ODPORNOŚĆ TERMICZNA
THERMAL RESISTANCE

PS MATERIAŁ
RAW MATERIAL

		INDEX	A	B	X	Y	Z		
1	2	T100	145	140	170	173	15		●
	1	T101	145	140	170	173	15	●	●
	1	T102	145	210	170	243	15		●
	1	T103	145	210	170	243	15	●	●



WYMIARY / DIMENSIONS



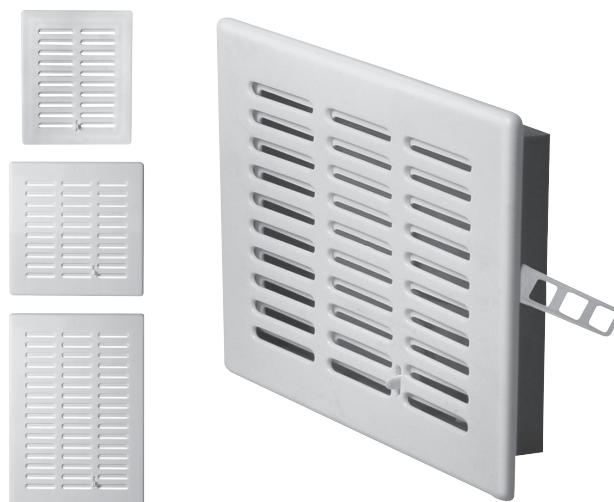
EKO



40°C ODPORNOŚĆ TERMICZNA
THERMAL RESISTANCE

PS+PP MATERIAŁ
RAW MATERIAL

		INDEX	A	B	X	Y	Z		
1	2	T01	107	137	135	165	20		●
	1	T02	107	137	135	165	20	●	●
1	2	T03	137	137	165	165	20		●
	1	T04	137	137	165	165	20	●	●
1	2	T05	137	207	165	235	20		●
	1	T06	137	207	165	235	20	●	●



WYMIARY / DIMENSIONS

